

WARDROBE SOLUTIONS



Universal
SERIES



- Elegance UNIVERSAL pull-out accessories products are compatible with full extension tandem rails of all brands with its special design.

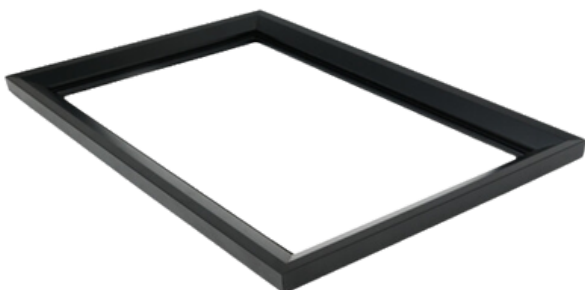
ELEGANCE
accessories

TROUSER RACK



| CODE | MODUL (mm) | COLOR | SIZE (mm) |
|-------------|------------|--------------------|------------|
| 17.01.05.01 | 500 | BLACK / ANTHRACITE | 464*500*60 |
| 17.01.06.01 | 600 | BLACK / ANTHRACITE | 564*500*60 |
| 17.01.07.01 | 700 | BLACK / ANTHRACITE | 664*500*60 |
| 17.01.08.01 | 800 | BLACK / ANTHRACITE | 764*500*60 |
| 17.01.09.01 | 900 | BLACK / ANTHRACITE | 864*500*60 |
| 17.01.10.01 | 1000 | BLACK / ANTHRACITE | 964*500*60 |

DRAWER MODUL



| CODE | MODUL (mm) | COLOR | SIZE (mm) |
|-------------|------------|--------------------|------------|
| 17.02.05.01 | 500 | BLACK / ANTHRACITE | 464*500*60 |
| 17.02.06.01 | 600 | BLACK / ANTHRACITE | 564*500*60 |
| 17.02.07.01 | 700 | BLACK / ANTHRACITE | 664*500*60 |
| 17.02.08.01 | 800 | BLACK / ANTHRACITE | 764*500*60 |
| 17.02.09.01 | 900 | BLACK / ANTHRACITE | 864*500*60 |
| 17.02.10.01 | 1000 | BLACK / ANTHRACITE | 964*500*60 |

- The clients use Glass or Wood according to the project.

SHOES RACK



| CODE | MODUL (mm) | COLOR | SIZE (mm) |
|-------------|------------|--------------------|------------|
| 17.03.06.01 | 600 | BLACK / ANTHRACITE | 564*500*60 |
| 17.03.07.01 | 700 | BLACK / ANTHRACITE | 664*500*60 |
| 17.03.08.01 | 800 | BLACK / ANTHRACITE | 764*500*60 |
| 17.03.09.01 | 900 | BLACK / ANTHRACITE | 864*500*60 |

WIRE BASKET

| CODE | MODUL (mm) | COLOR | SIZE (mm) |
|-------------|------------|--------------------|------------|
| 17.04.06.01 | 600 | BLACK / ANTHRACITE | 564*500*60 |
| 17.04.07.01 | 700 | BLACK / ANTHRACITE | 664*500*60 |
| 17.04.08.01 | 800 | BLACK / ANTHRACITE | 764*500*60 |
| 17.04.09.01 | 900 | BLACK / ANTHRACITE | 864*500*60 |



ORGANIZER

| CODE | MODUL (mm) | COLOR | SIZE (mm) |
|-------------|------------|--------------------|------------|
| 17.05.07.01 | 700 | BLACK / ANTHRACITE | 564*500*60 |
| 17.05.08.01 | 800 | BLACK / ANTHRACITE | 864*500*60 |
| 17.05.09.01 | 900 | BLACK / ANTHRACITE | 964*500*60 |

- Velvet Coating Surface On Wooden Frame



COTTON BASKET WITH TROUSER RACK

| CODE | MODUL (mm) | COLOR | SIZE (mm) |
|-------------|------------|--------------------|------------|
| 17.20.06.01 | 600 | BLACK / ANTHRACITE | 564*500*60 |
| 17.20.09.01 | 900 | BLACK / ANTHRACITE | 864*500*60 |
| 17.20.10.01 | 1000 | BLACK / ANTHRACITE | 964*500*60 |



WARDROBE SOLUTIONS

Prestige
Collection



- The Elegance PRESTIGE pull-out collection is exclusive and designed to stand out.

ELEGANCE
accessories

*Prestige
Collection*

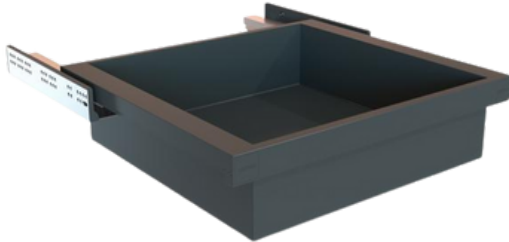
ELEGANCE

accessories



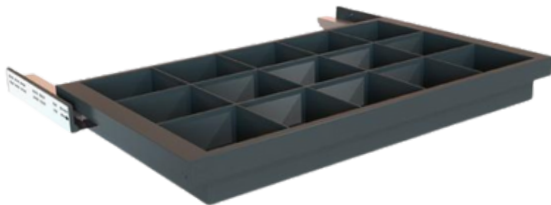
ACCESSORIES DRAWER

| CODE | MODUL (mm) | COLOR | SIZE |
|-------------|------------|-------|------------|
| 18.01.60.01 | 600 | BLACK | 564*500*60 |
| 18.01.90.01 | 900 | BLACK | 964*500*60 |



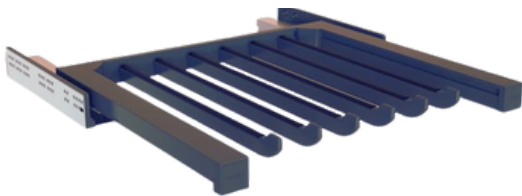
DEEPLY DRAWER

| CODE | MODUL (mm) | COLOR | SIZE |
|-------------|------------|-------|------------|
| 18.02.60.01 | 600 | BLACK | 564*500*60 |
| 18.02.90.01 | 900 | BLACK | 964*500*60 |



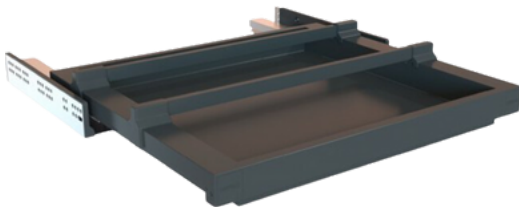
ORGANIZER

| CODE | MODUL (mm) | COLOR | SIZE |
|-------------|------------|-------|------------|
| 18.03.60.01 | 600 | BLACK | 564*500*60 |
| 18.03.90.01 | 900 | BLACK | 964*500*60 |



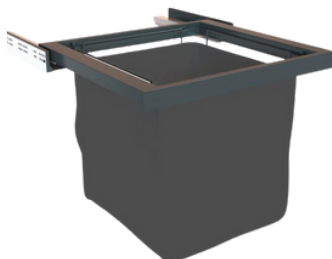
TROUSER RACK

| CODE | MODUL (mm) | COLOR | SIZE |
|-------------|------------|-------|------------|
| 18.04.60.01 | 600 | BLACK | 564*500*60 |
| 18.04.90.01 | 900 | BLACK | 964*500*60 |



SHOES RACK

| CODE | MODUL (mm) | COLOR | SIZE |
|-------------|------------|-------|------------|
| 18.04.60.01 | 600 | BLACK | 564*500*60 |
| 18.04.90.01 | 900 | BLACK | 964*500*60 |



BASKET DRAWER

| CODE | MODUL (mm) | COLOR | SIZE |
|-------------|------------|-------|------------|
| 18.06.60.01 | 600 | BLACK | 564*500*60 |

REVOLVING SHOES STORAGE SYSTEMS



| CODE | COLOR | SIZE |
|-------------|-------------|--------------------|
| 18.07.20.01 | BLACK/WHITE | 1920-2120 *900*365 |

| CODE | COLOR | SIZE |
|-------------|--------------|----------------------|
| 17.46.01.10 | BLACK / GREY | 700X360X 790 - 990 |
| 17.46.02.10 | BLACK / GREY | 700X360X 1070 - 1270 |
| 17.46.03.10 | BLACK / GREY | 700X360X1350 - 1550 |
| 17.46.04.10 | BLACK / GREY | 700X360X1630 - 1830 |
| 17.46.05.10 | BLACK / GREY | 700X360X910 - 21100 |

FOLDING MIRROR

| CODE | MODUL (mm) | COLOR | SIZE |
|-------------|------------|---------|-------------------|
| 17.44.00.00 | min 350 | BLACK / | 120 x 340 x 1300- |



TOP-MOUNTED TROUSER RACK



| CODE | MODUL (mm) | COLOR |
|-------------|------------|---------|
| 17.17.00.01 | min 400 | BLACK / |



| CODE | DEEP | COLOR |
|-------------|--------|---------|
| 18.08.00.01 | 350 MM | BLACK / |

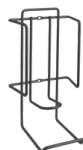
FOLDING IRON BOARD



| CODE | MODUL (mm) | COLOR |
|-------------|-------------------|------------|
| 17.45.00.01 | 150 x 340 x 1480- | GREY/BLACK |



| CODE | MODUL (mm) | COLOR |
|-------------|-----------------|-------|
| 17.14.00.01 | 330 x 495 x 150 | BLACK |



IRON HOLDER

| CODE | COLOR |
|-------------|---------|
| 17.16.00.01 | BLACK / |

ELEGANCE

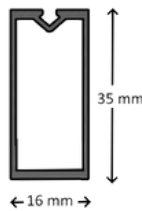
accessories

WARDROBE SOLUTIONS



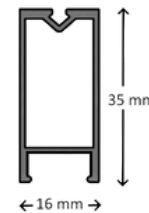
PULL-DOWN LIFT

| CODE | MODUL (mm) | COLOR |
|-------------|------------|--------------|
| 17.20.07.01 | 800-1000 | BLACK / GREY |



RECTANGLE HANGER PROFILE

| CODE | ←→ | | COLOR |
|-------------|--------|-------|-------|
| 17.26.30.00 | 300 cm | 8 pcs | |



RECTANGLE LED HANGER PROFILE

| CODE | ←→ | | COLOR |
|-------------|--------|-------|-------|
| 17.06.30.00 | 300 cm | 8 pcs | |

RECTANGLE ROD SUPPORT



HANGER SUPPORT ABS

| CODE | COLOR |
|-------------|--------------|
| 17.06.01.01 | BLACK / GREY |



HANGER 90 SUPPORT ABS

| CODE | COLOR |
|-------------|--------------|
| 17.06.02.01 | BLACK / GREY |



ANTI-SLIP GASKET

| CODE | COLOR | |
|-------------|-------|--------|
| 17.01.01.01 | BLACK | 200 MT |



LED CAP PROFILE 3 MT

| CODE | COLOR | |
|-------------|-------|---------|
| 17.91.30.00 | WHITE | 200 Pcs |